



The renderings depicted in this brochure represent an artist's concept of current development and design. We reserve the right to make modifications or changes without notice or obligation to the floor plan, site plan, landscape plan, house location or orientation map, or any of the features, options or designs shown. Any and all dimensions referenced herein including lot size are approximate. Options shown are offered for an additional cost. Please see your sales consultant for specific details regarding the elevations, plans, pricing, dimensions, specifications, or products offered in the community. This material shall not constitute a valid offer in any state where prior registration is required or void by law. ©2016 High Point Development in association with Robertson Douglas Group. All rights reserved. 04/2016

Elevation 2



The Rutland Model, newly designed for the Estates at Holmdel Fields, is a base 4,616 square foot home with 4 bedrooms, 3.5 baths and a 3-car garage. The home flows nicely with one end of the first floor having the living area and study, separated by a powder room and transition area leading to the conservatory, and the other end featuring the entertaining area consisting of a large gourmet kitchen, breakfast nook and two story family room. These two ends of the home are separated by either a half octagonal grand staircase to the second floor or an optional curved staircase. The second floor features four bedrooms, each with a walk-in closet, and each with direct access to a bathroom. The master suite boasts a huge sleeping area, with optional sitting room and opulent master bath. With structural add-ons, this floor plan offers ultimate flexibility, so a buyer can customize this generous living space.

Elevation 1 with optional water table



HOLMDELFIELDS.COM



Elevation 3

RUTLAND

4,616 Square Feet | 4 Bedroom | 3.5 Bath | 3-Car Garage
In-Law Suite +353 sq.ft. | Sunroom +136 sq. ft. | Sitting Room +113 sq.ft.

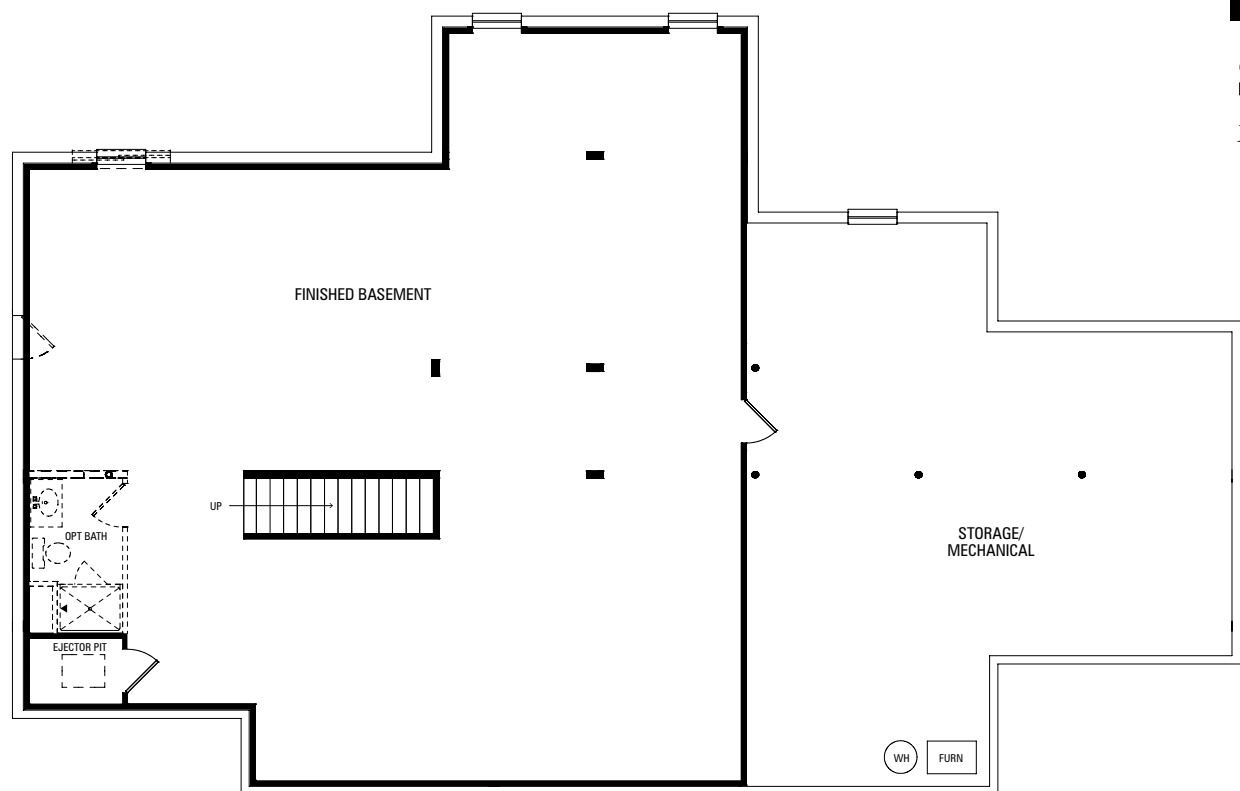
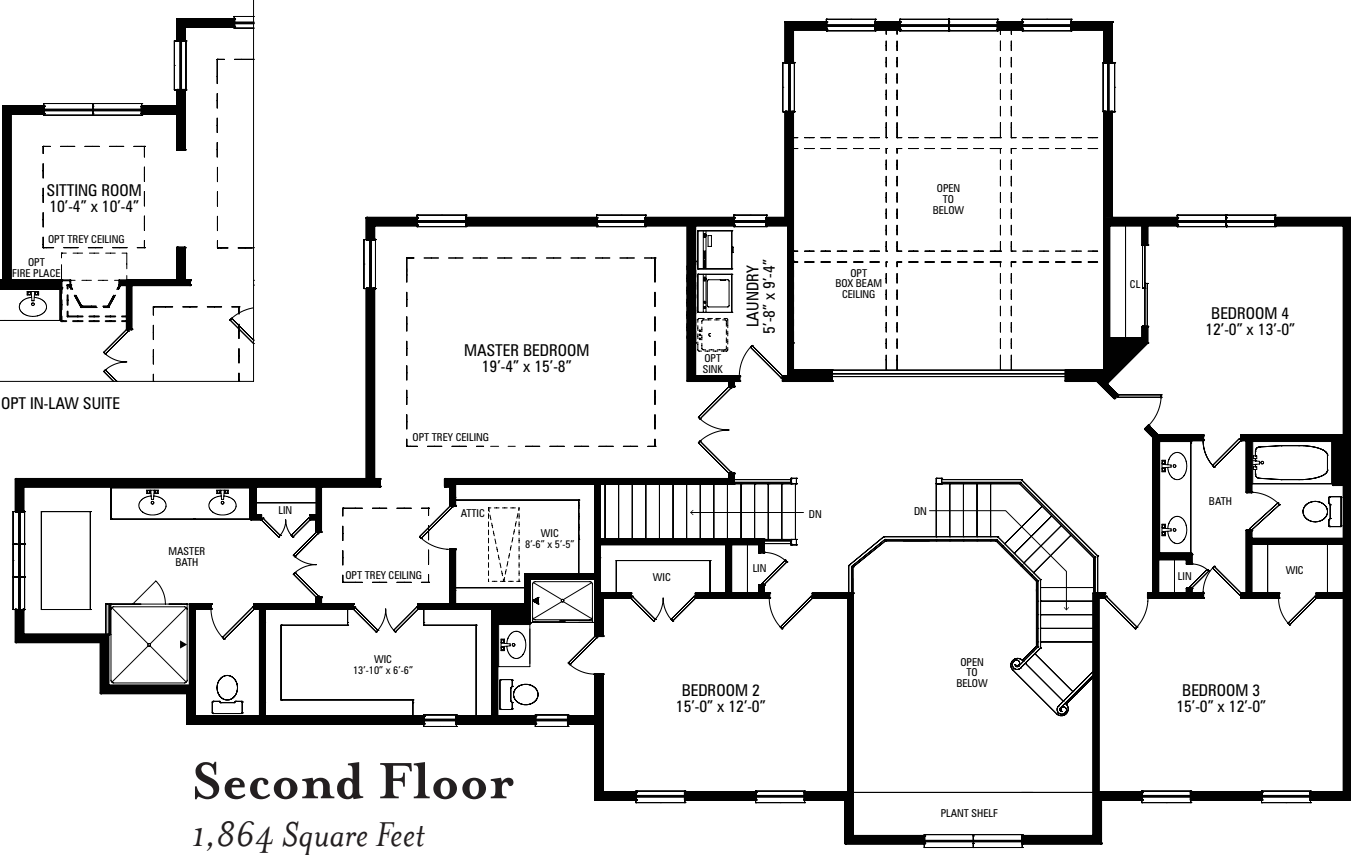
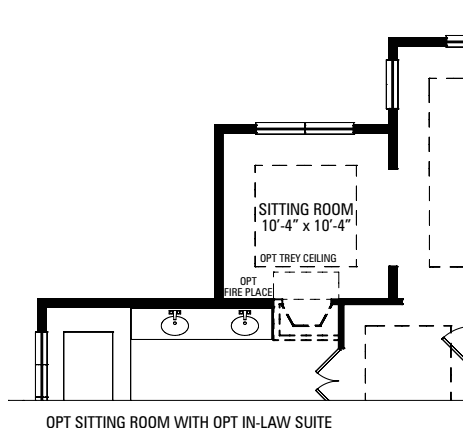
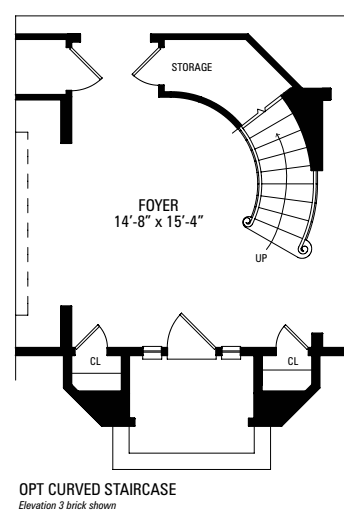
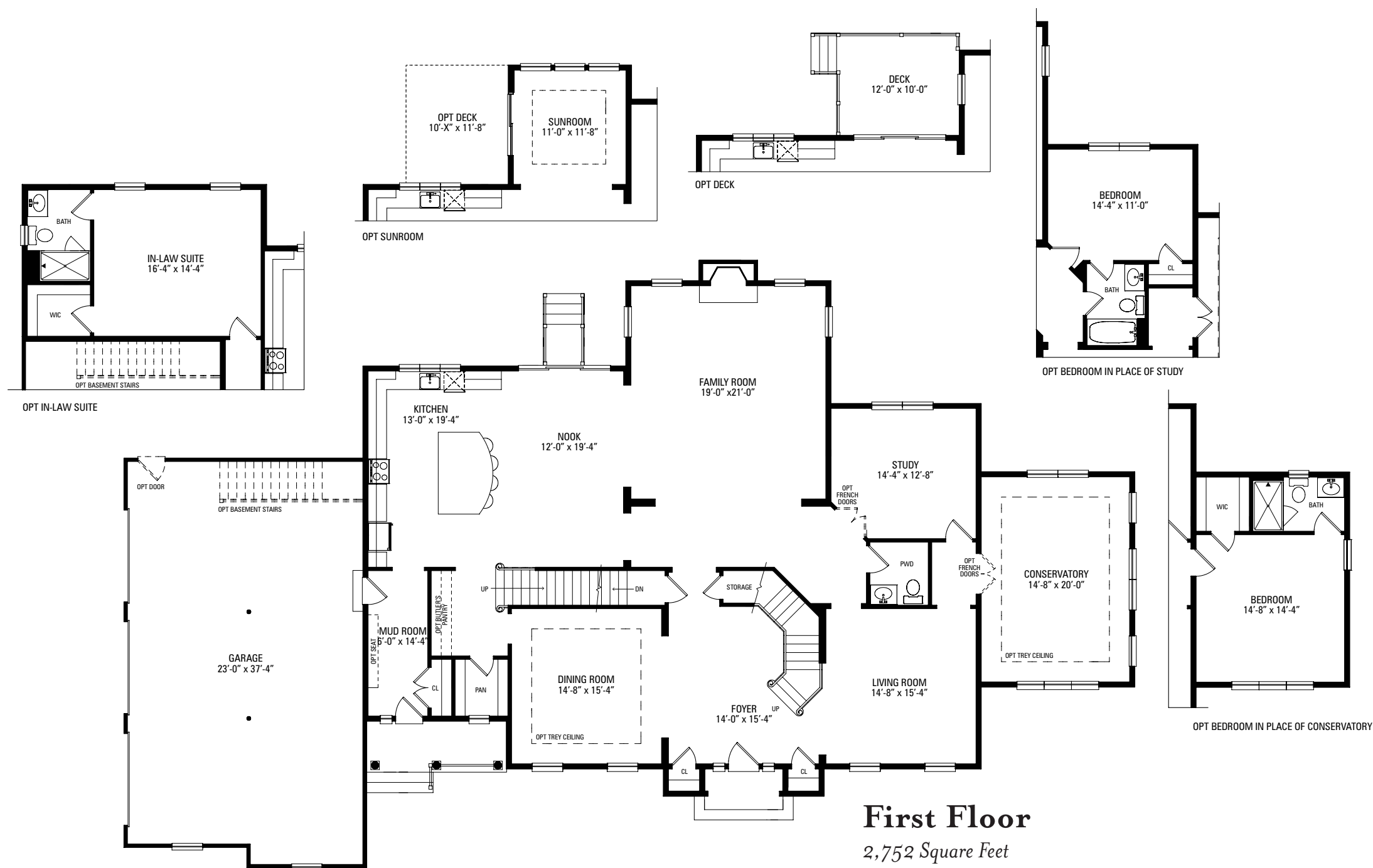


ESTATES AT
HOLMDEL FIELDS

RUTLAND

4,616 Square Feet | 4 Bedroom | 3.5 Bath | 3-Car Garage

In-Law Suite +353 sq.ft. | Sunroom +136 sq.ft. | Sitting Room +113 sq.ft.



Optional Finished Basement
1,768 Square Feet

