



The renderings depicted in this brochure represent an artist's concept of current development and design. We reserve the right to make modifications or changes without notice or obligation to the floor plan, site plan, landscape plan, house location or orientation map, or any of the features, options or designs shown. Any and all dimensions referenced herein including lot size are approximate. Options shown are offered for an additional cost. Please see your sales consultant for specific details regarding the elevations, plans, pricing, dimensions, specifications, or products offered in the community. This material shall not constitute a valid offer in any state where prior registration is required or void by law. © 2016 High Point Development in association with Robertson Douglas Group. All rights reserved. 04/2016

Elevation 3



Leyton model main entry features dramatic angled front staircase anchors a grand floor plan which includes large rooms and such unique spaces as a walk-in pantry and china closet. A second front entrance and an optional staircase from the garage to the basement are unique to this model. A private front study, formal living with direct entrance to large conservatory and dining rooms with high ceilings enhance this homes open, airy feeling. The large gourmet kitchen with center island and an adjacent breakfast area opens to the two story family room with gas fire place and access to a convenient rear stair. Upstairs, the lavish master bedroom suite feature roomy walk-in closets, a large and luxurious master bath with soaking tub. Other highlights include a powder room off the foyer, "princess suite", a "jack-and-jill" bath, convenient second-floor laundry and optional sitting room.

Elevation 1 with optional water table



HOLMDELFIELDS.COM



Elevation 2

# LEYTON

4,314 Square Feet | 4 Bedroom | 3.5 Bath | 3-Car Garage  
In-Law Suite +306 sq.ft. | Sunroom +140 sq.ft. | Sitting Room +168 sq.ft.

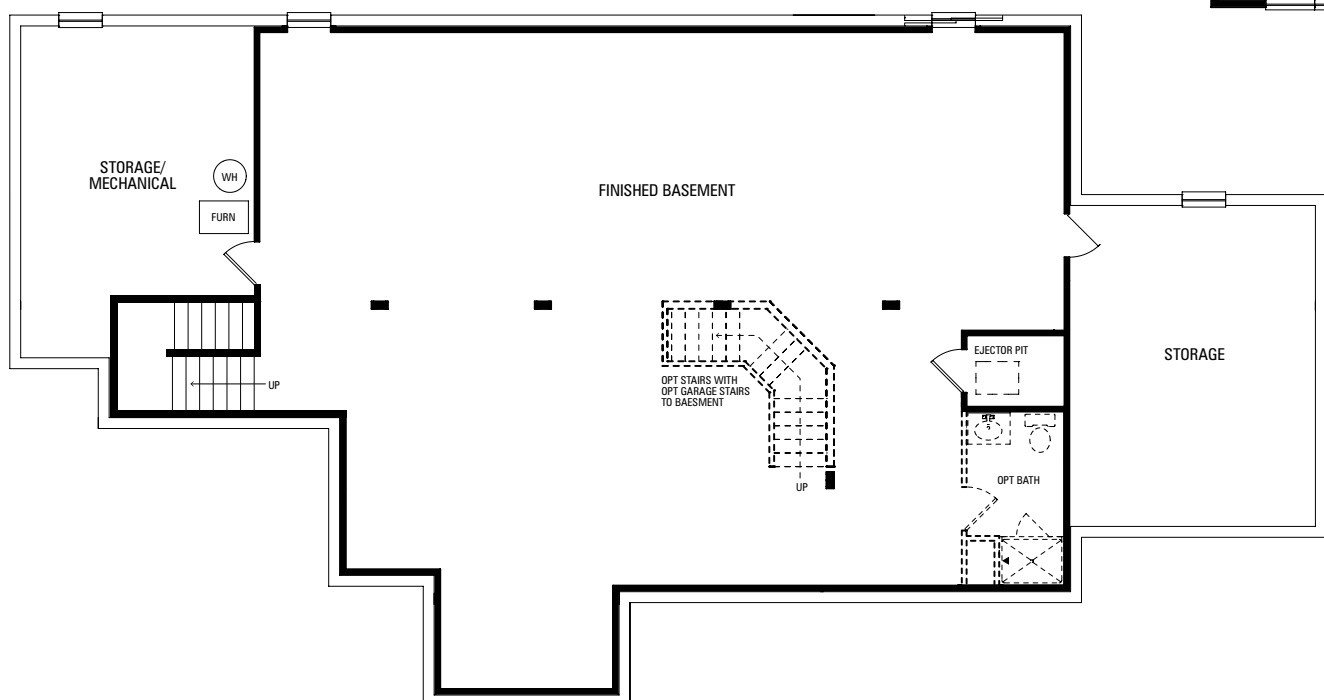
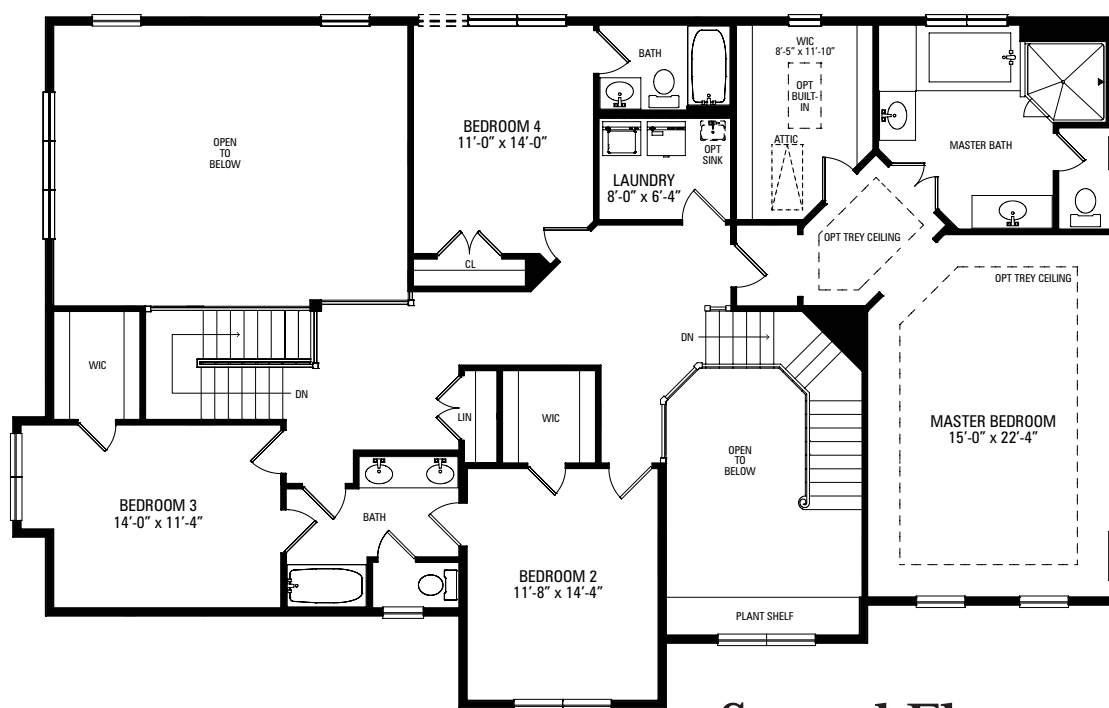
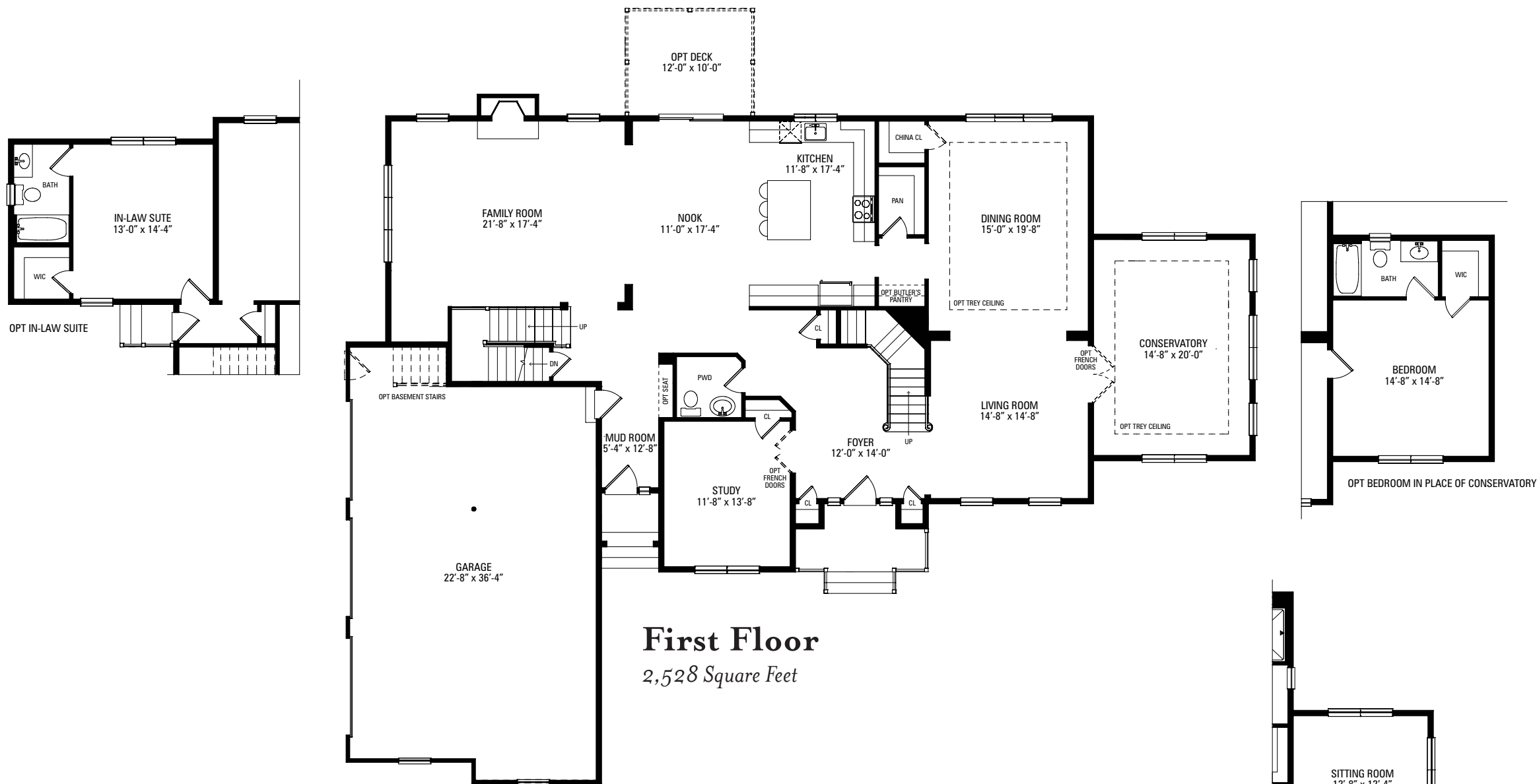
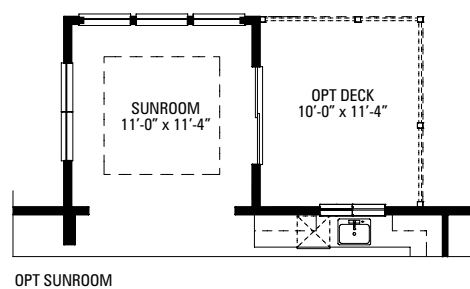


ESTATES AT  
HOLMDEL FIELDS

# LEYTON

4,314 Square Feet | 4 Bedroom | 3.5 Bath | 3-Car Garage

In-Law Suite +306 sq.ft. | Sunroom +140 sq.ft. | Sitting Room +168 sq.ft.



**Optional Finished Basement**  
1,731 Square Feet

